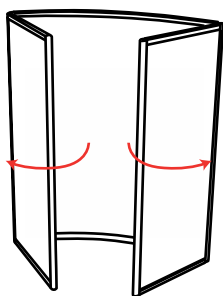
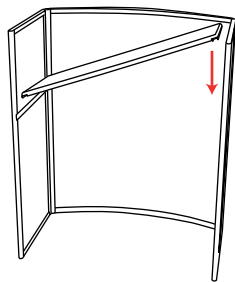


# Návod na instalaci Reklamní stolek GEAR 2000

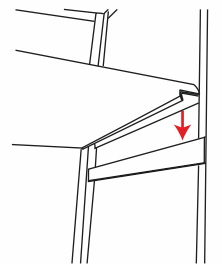
production co.



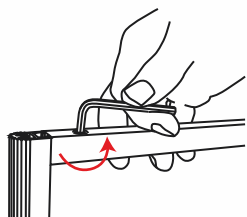
Otevřete stolek



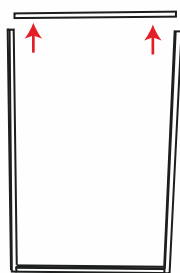
Vložte zadní pult



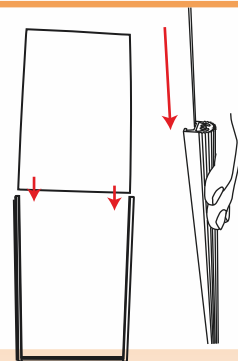
Pult zafixujte



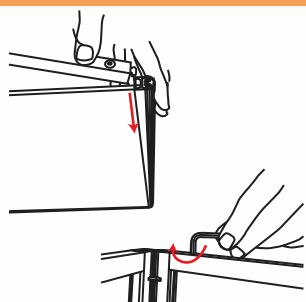
Dobře utáhněte lišty



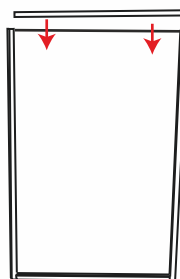
Máte připravenou konstrukci  
pro vsunutí čelní desky



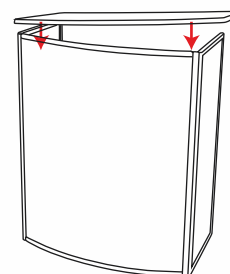
Vsuňte a zafixujte čelní desku



Dobře utáhněte lišty



Upevněte horní desku



Stolek GEAR Q je připraven